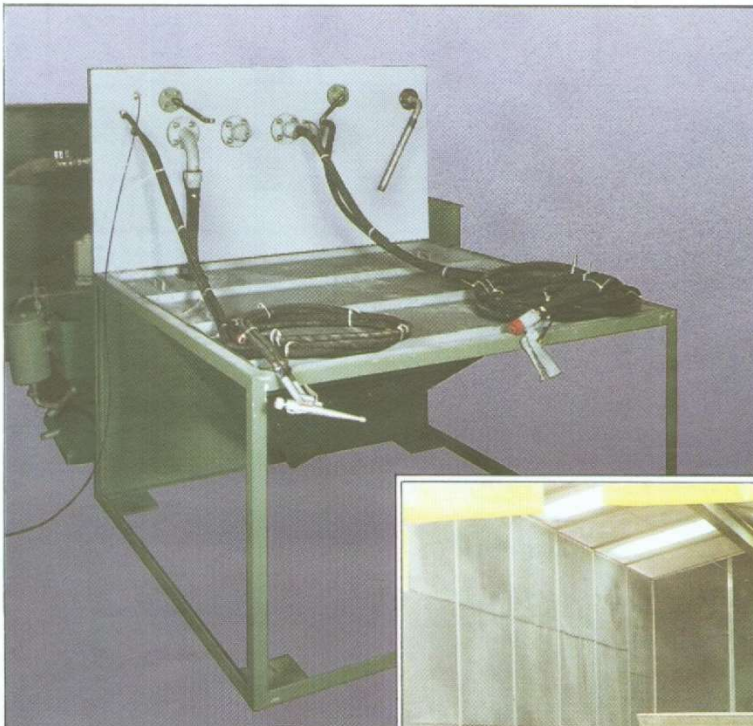
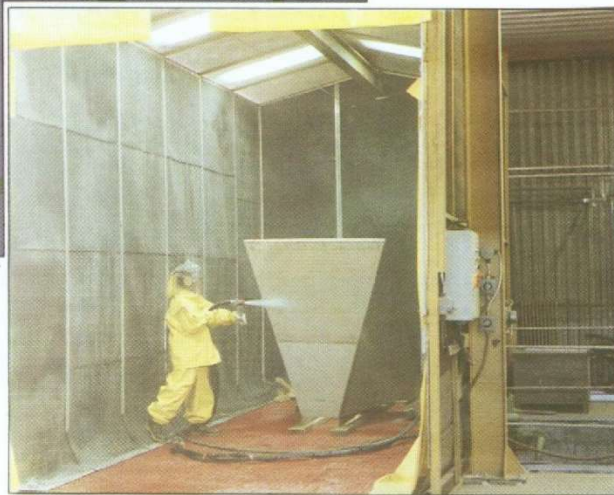


Vaqua sump units



This is a typical light duty sump unit employing a trigger operated blast gun with automatic switching from blast to bypass.



A walk-in booth built on to a 1830mm square Vaqua sump unit and fully installed to shop floor level.

Product Description

VAQUA wet blast machines are available in the form of specially designed, automatic machines as well as cabinets in various sizes for manual operation.

Sump units extend the range and flexibility for VAQUA by providing only the power pack and base of the machine. This leaves the buyer free to decide the ultimate size, shape and type of machine he wishes to install.

This concept is particularly successful where the user wishes to install walk-in booths to suit particular features of his factory size or large special machines.

Standard Equipment

The minimum extent of supply consists of the media collection sump with its critical side slopes, the recirculation pump and tee piece, the media and compressed air circuits and the electrical controls.

A rear wall or backplate supports this equipment and provides the connections from external to internal fittings. The backplate also serves as the basis for further fabrications.

The single process gun and a water wash nozzle complete the standard fittings.

Additional Equipment

The range of additional equipment is almost limitless, but the following items represent those most likely to be required.

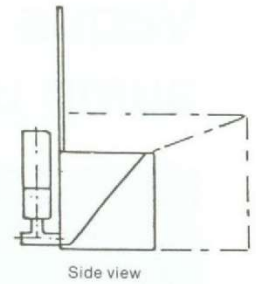
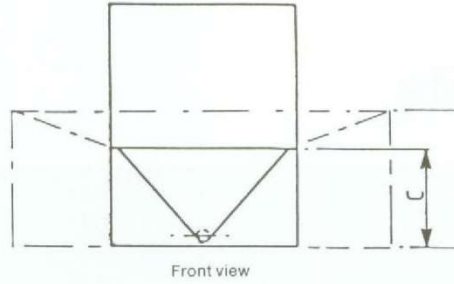
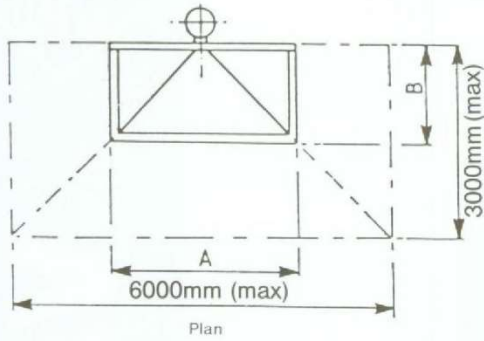
- Increased operating area by increasing the extent of the secondary sump slopes (see diagram overleaf).
- Wash down facility for the extended slopes.
- Load bearing grids and sump support structures for heavy workpieces.
- Multiple blast guns which may be trigger controlled for "walk in" manual booths or controlled by push buttons for external or semi-automatic use.
- Fabricated steel panels incorporating glove ports and windows to permit the inclusion of operating positions into additional fabrications.
- Lightweight protective clothing including clean air breathing facilities for the safety and comfort of operators working inside Vaqua Booths.

Further information on equipment is readily available. Please indicate your interest to our Technical Staff.

Vaqua sump units

Vaqua Sump Units

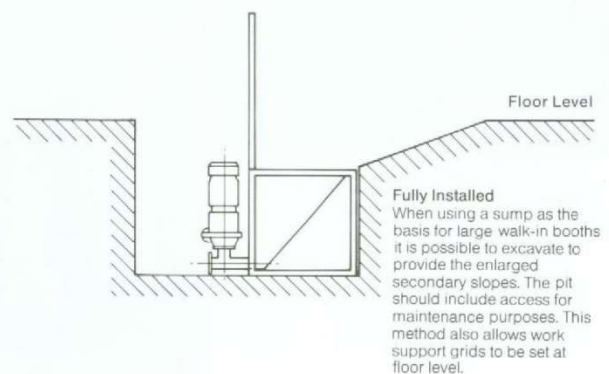
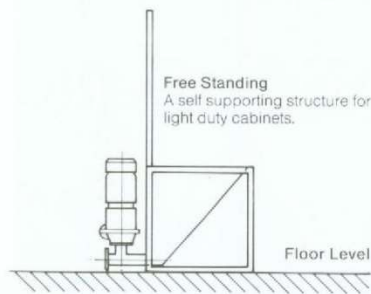
Dimensions (mm)



Nominal Size	Length (A)	Width (B)	Height (C)
1220 square	1220	1220	850
1830 square	1830	1830	1100
1000 x 2000	1000	2000	1000

When larger units are required it is possible to set the sump unit into a suitable excavation and to provide work support grids at floor level. The range of additional equipment includes increased sump sizes by extended secondary slopes up to a maximum of 3000 x 6000mm.

Installation



Services

Electricity: 380 volt, 3 phase, 50 Hz
440 volt, 3 phase, 50 Hz
(or alternatives specified)

Water: Mains Supply 1/2" BSP Connection

Compressed Air: 5.6kg/cm² (80 p.s.i.) Maximum pressure.
1.7cu.m/min (60cfm) maximum volume (per gun)

Requirements for ducting, extration, drainage and other site requirements will vary with the design of the upper structure. Abrasive Developments would be pleased to discuss and advise on such matters.

Noise levels will depend entirely on the type and design of the upper structure and on the degree of sound insulation which can be included. Attention is drawn to the Health and Safety at Work Act and to general workshop practice for noise emission.

ADAE PTY LTD TRADING AS
Dana-Ridge

A.B.N. 93 109 483 007

HEAD OFFICE

Unit 12/67 Bancroft Road PO Box 2834
Pinkenba QLD 4008 Ascot QLD 4007
AUSTRALIA

Australia Toll-free: 1800 806 316

New Zealand Toll-free: 0800 944 788

Phone: +61 (0)7 3860 4913

Website: www.dana-ridge.com.au